

# Nursery News...



Newsletter June 2022

## Stories and Sign of the Month.....

Story:  
'My Daddy is Brilliant'

Letter: D

Number: 6

## Veg/Fruit of the Month:

Broad Beans



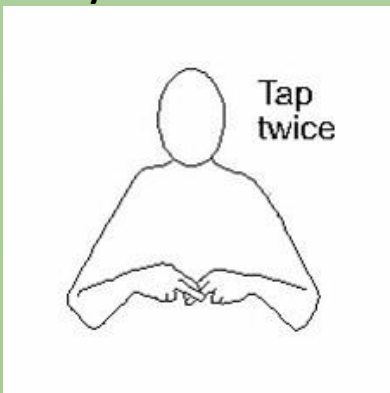
Cauliflower



Cherries



Signs:  
Daddy



Baby



If you can, please download 'Spread the Sign' app. and practise the signs at home.

## Dates for the Diary.....

### Forest School Open Day:

*Please note that we are closed on Bank Holidays and will be closed for the extended Queen's Platinum Jubilee holiday on Thursday 2<sup>nd</sup> & Friday 3<sup>rd</sup> June.*

Forest School Open Day-  
Saturday 9<sup>th</sup> July, 11.30 – 1.30pm



We hope you all have a very enjoyable Platinum Jubilee holiday in honour of the Queen's 70 year reign. Please take lots of pictures of any activities that you are doing and put them on Tapestry to commemorate this historic occasion!



If you have a sibling or family member starting Nursery, Toddler Cabin or Forest School in September, please make sure that the registration pack has been completed and returned. We will also need to see proof of ID, either passport or birth certificate and the Red Book which will show all vaccination details.

Please provide a named cotton/reusable washable bag for wet/dirty clothes. Make sure all belongings are named.

We are part of a Collaboration of Early Years Settings and have joined together to set a Summer Challenge. A prize will be given to all those who complete and put pictures on Tapestry of all of the following:

- Lay on the floor and look at the clouds.
- Share a book about nature/animals.
- Take a trip to the Library.
- Share photos of a day out.
- Jump in puddles or in the sea/river/stream.
- Look in a mirror and pull funny faces.
- Make a den and share a story inside.
- Have a picnic, indoors or out.

## WHY DO OUR KIDS MISBEHAVE?

OUR BELIEFS	IN REALITY
• They're not listening to me on purpose	• They need loving and consistent boundaries
• They want to be naughty and bug me	• Their body needs food, sleep or sensory input
• They're just attention-seeking	• They are unaware of their own needs
• They don't respect me	• They need connection
• I'm not cracking down hard enough	• They are unable to manage their impulses
• They don't care about anyone but themselves	• They are curious about cause and effect

SEND information hub is to help support parents.

<http://www.kent.gov.uk/education-and-children/special-educational-needs>

Here is a website that you might find useful whether your child has a diagnosis or not.

<http://www.autismapprentice.co.uk>